

CORPORATE PROFILE



ELETTRONICA GROUP

A FOCUSED GLOBAL LEADER



PROPRIETARY NOTICE

The information contained in this document is the property of ELETTRONICA S.p.A. Use of this information is limited to that for which it is supplied and may not be disclosed to any Third Party without the express written permission of ELETTRONICA S.p.A..

27/04/2017

# ELETTRONICA GROUP

## OUR MISSION



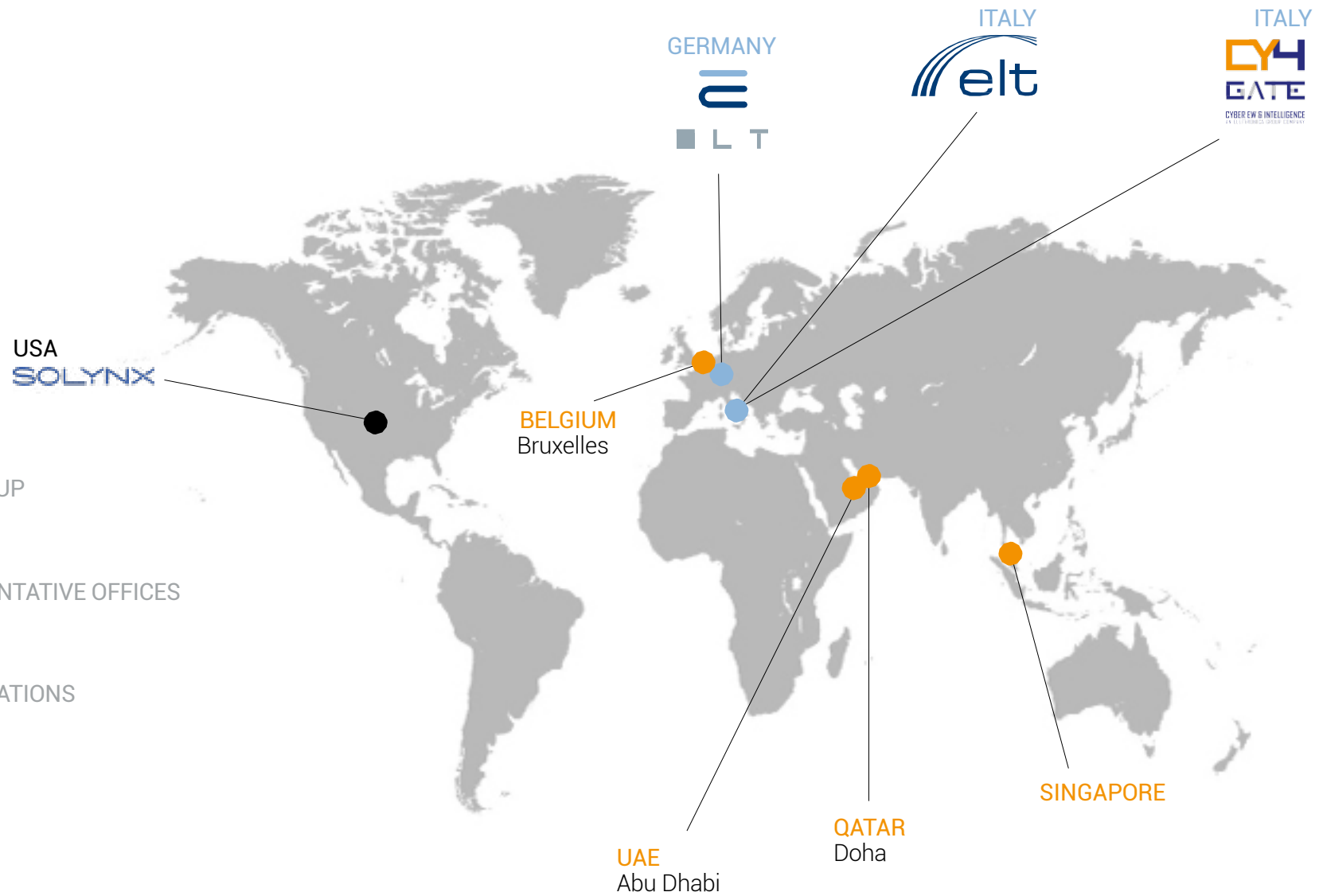
***To offer the most innovative solutions guaranteeing the security of people, assets and information in the most complex operational scenarios: this is our sole mission.***

*Our clients recognise the unique nature of our offering: in choosing to work with us, they entrust themselves to an international company of outstanding excellence which, thanks to its Italian roots and professionals who mould the best technologies to suit effective needs, creates appropriate "bespoke" solutions.*



# ELETTRONICA GROUP

A FOCUSED GLOBAL LEADER



- THE GROUP
- REPRESENTATIVE OFFICES
- PARTICIPATIONS



ELECTRONIC WARFARE



Revenues 2015  
215 Mln€

Order Backlog 2015  
824 Mln€

People  
710 FTE

Established in 1951, ELETTRONICA is a World Leader in Electronic Warfare with a complete portfolio of state-of-the-art solutions to satisfy the most challenging requirements of modern operational scenarios.

The solutions designed and manufactured by ELETTRONICA cover a wide range of applications and missions:  
ELINT, COMINT (SIGINT), ISR, INFRARED, SELF-PROTECTION, ELECTRONIC ATTACK.



# ELETTRONICA GROUP

## OUR HISTORY



### MANUFACTURING, HOMELAND SECURITY AND SIMULATION

Revenues 2015  
13 Mln€

Order Book 2015  
18 Mln€

People  
80 FTE

Founded in 1978 to support Elettronica in key European Programs (F104, Tornado, EFA), ELT GmbH now is a Centre of Excellence in Homeland Security, Test Validation Systems and Video Digital Boards Design and Production.



[elettronica.de](http://elettronica.de)



# ELETTRONICA GROUP

## OUR HISTORY



## CYBER EW & INTELLIGENCE

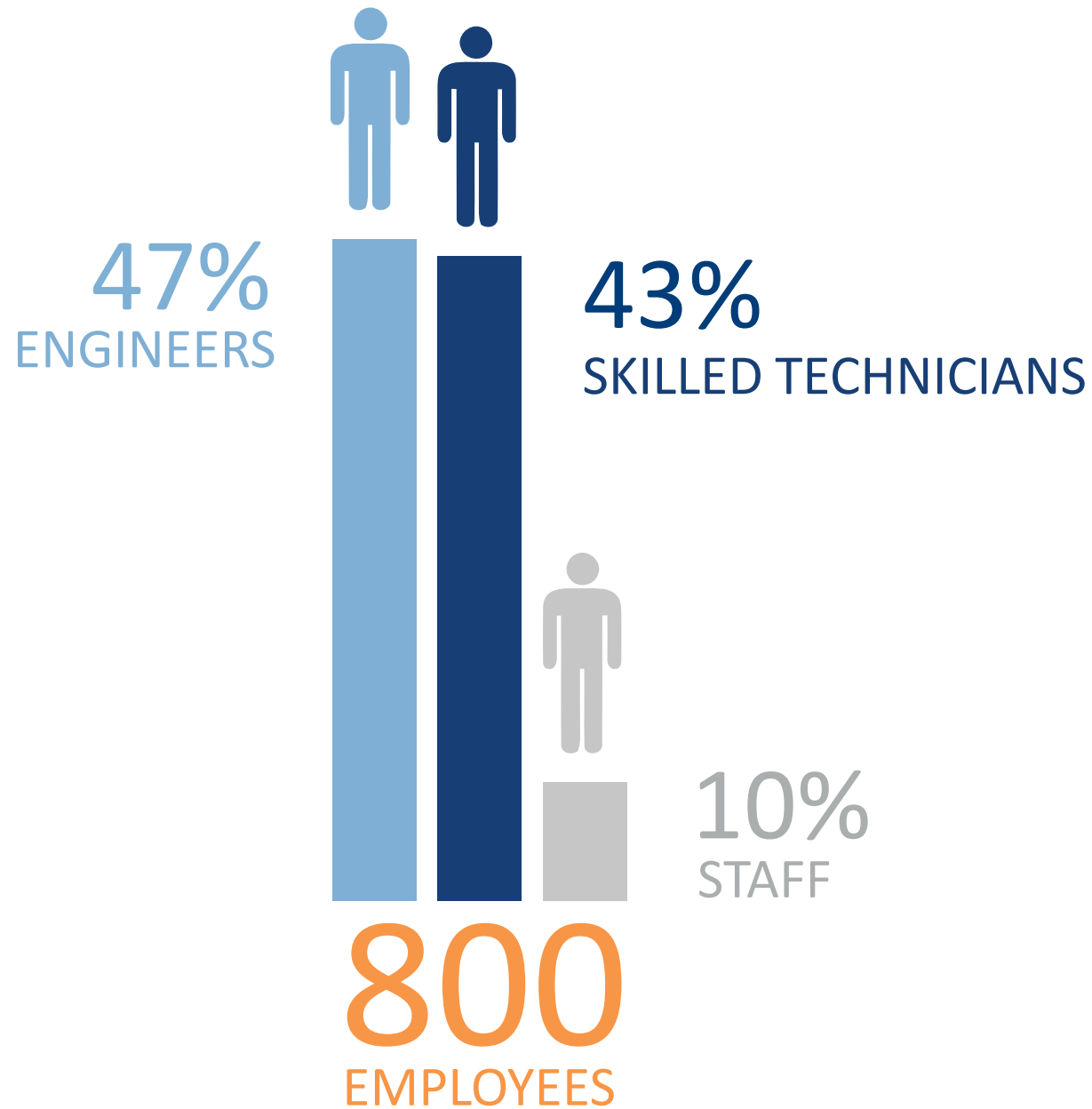
Established in 2014, CY4GATE is a Joint Venture between ELETTRONICA and Expert System - world leader in innovative solutions based on semantic intelligence - which can provide Governments with software and hardware solutions to support the full intelligence cycle and to succeed in Cyber operations through the use of the electromagnetic spectrum, communications, operating systems and wired networks.



[cy4gate.com](http://cy4gate.com)



# ELETTRONICA GROUP PERSONNEL



# ELETTRONICA GROUP

A 360° PARTNER IN ELECTRONIC WARFARE, CYBER EW, INTELLIGENCE, EDUCATION & TRAINING  
SOLUTIONS TAILORED TO THE USER, A PASSION FOR EXCELLENCE, A REQUIREMENT-ORIENTED MISSION



AIR



NAVAL



LAND



CYBER

Electronic Attack & Self-Protection

Intelligence Surveillance Reconnaissance

Electro Optical/Infra-Red

Cyber EW & Intelligence

Public Security & Law Enforcement

Customer Support

RWR/RESM, RECM, CECM, COMM JAM

RESM, CESM, SIGINT (ELINT, COMINT)

DIRCM

OSINT, DIGITAL & SPECTRUM INTELLIGENCE

OSINT, BORDER AND AREA SURVEILLANCE  
SPECTRUM INTELLIGENCE SECURITY

EDUCATION, OPERATIONAL SUPPORT, INTEGRATED  
LOGISTICS







*PREPARE & EXECUTE*

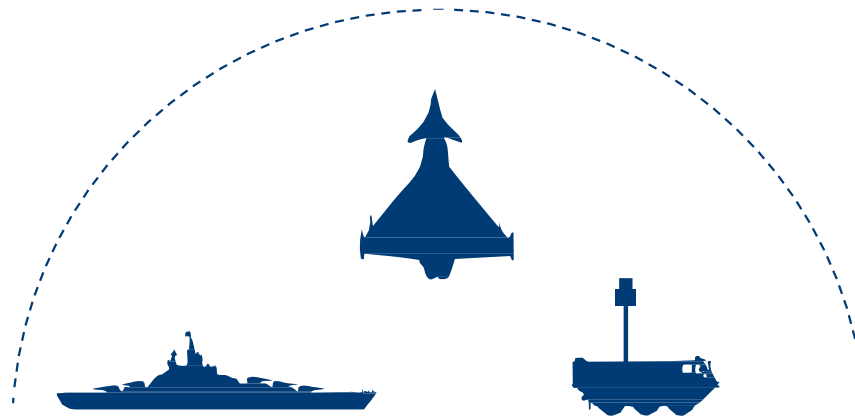
*SUPPORT*



*ANTICIPATE THE  
FUTURE*



PREPARE & EXECUTE



# ELECTRONIC ATTACK & SELF-PROTECTION

FULLY INTEGRATED ELECTRONIC ATTACK & SELF-PROTECTION SYSTEMS

OPEN MODULAR ARCHITECTURES

ADVANCED SMART JAMMING TECHNIQUES



# PREPARE & EXECUTE

## Electronic Attack & Self-Protection



*EUROFIGHTER TYPHOON*  
*«PRAETORIAN DASS»*  
*(TX/RX SS APA)*



*SELF-PROTECTION JAMMER*

*TORNADO*  
*ESM FAMILY «ELT/750»*



*ELECTRONIC SUPPORT MEASURES*

*MIRAGE 2000*  
*LB ECM «ELT/558»*



*LOW BAND JAMMER*



# PREPARE & EXECUTE

## Electronic Attack & Self-Protection



AW101 CSAR  
 INTEGRATED ESM/ECM «VIRGILIUS»  
 DIRCM «ELT/572»



FIELD PROVEN PHYSICALLY INTEGRATED EW SUITE  
 (ESM/ECM) + DIRCM

NH90 TTH  
 LIGHT ESM «ELT/160»

NH90 NFH ESM  
 «ELT/733»



ROBUST, RELIABLE, COMPACT  
 RWR/ESM FAMILY

A-129 MANGUSTA RWR  
 «ELT/156 FAMILY»



LIGHT, COMPACT, RELIABLE  
 RWR





# PREPARE & EXECUTE

## Electronic Attack & Self-Protection



CAVOUR CARRIER ECM  
«NETTUNO 4100»

FREMM & HORIZON FREGATE  
ECM «NETTUNO 4100»

ITALIAN NAVY LHD & PPA INTEGRATED  
ESM/ECM <<VIRGILIUS>>



TX/RX SS ECM



360° SELF-PROTECTION ECM



SELF-PROTECTION & ELECTRONIC ATTACK  
RADAR-COOPERATIVE EW SYSTEM



# PREPARE & EXECUTE

## Electronic Attack & Self-Protection



*RESPONSIVE COUNTER RC-IED SYSTEM FOR MILITARY AND LAW ENFORCEMENT MISSIONS  
COMPACT, LIGHT, TACTICAL, HIGH-PERFORMANCE*



*RC-IED JAMMER  
«ELT/334»*



# PREPARE & EXECUTE

## Electronic Attack & Self-Protection



RECM «ELT/333»



COMMUNICATION JAMMER



EWC2

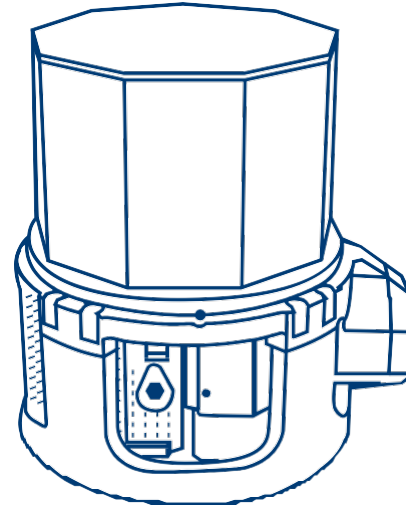
---

MOBILE, COMPUTER-ASSISTED JAMMING SYSTEMS WITH STATE-OF-THE-ART ACQUISITION AND ANALYSIS CAPABILITIES FOR RADAR AND COMMUNICATION BANDS





PREPARE & EXECUTE



EO/IR

Electro Optical/InfraRed



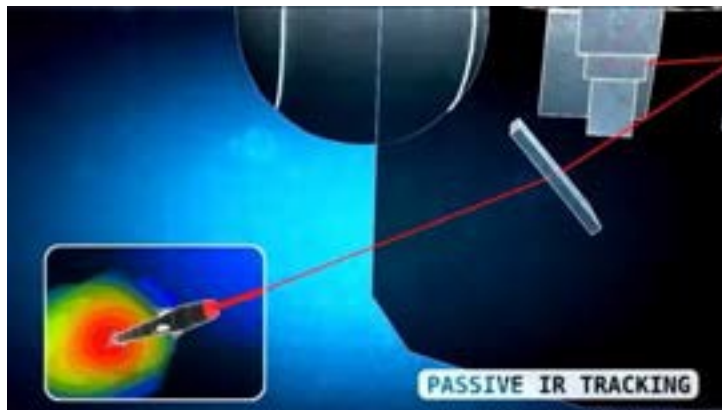
# PREPARE & EXECUTE EO/IR



AW101 CSAR  
«ELT/572 DIRCM»



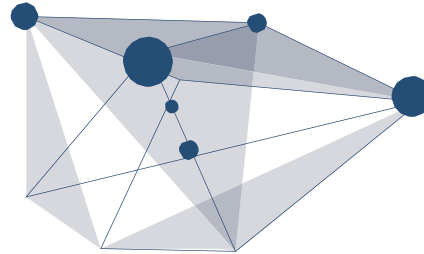
BOMBARDIER GLOBAL EXPRESS  
«ELT/572 DIRCM»



FULL PROTECTION AGAINST IR-GUIDED THREATS



PREPARE & EXECUTE



# SIGINT & ISR

Signal Intelligence, Surveillance & Reconnaissance

VERY HIGH SENSITIVITY AND ACCURACY SIGNAL INTELLIGENCE RECEIVERS

STATE-OF-THE-ART AUTOMATIC PROCESSING

COMPREHENSIVE, SUPERIOR SITUATION AWARENESS AND COMMON OPERATING PICTURE



# PREPARE & EXECUTE SIGINT & ISR



*C27J*  
ESM «ELT/741 & ELT/800»

*ATR72*  
ESM «ELT/741 & ELT/800»

*BOMBARDIER GLOBAL EXPRESS*  
«ELT/819 + ELT/572 DIRCM»

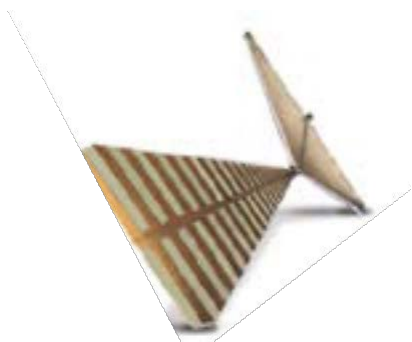


# PREPARE & EXECUTE SIGINT & ISR



*BAYNUNAH  
ESM «SEAL H»*

*ITALIAN NAVY LHD & PPA  
ESM «ZEUS»*



# PREPARE & EXECUTE SIGINT & ISR



HDW CLASS

TODARO CLASS

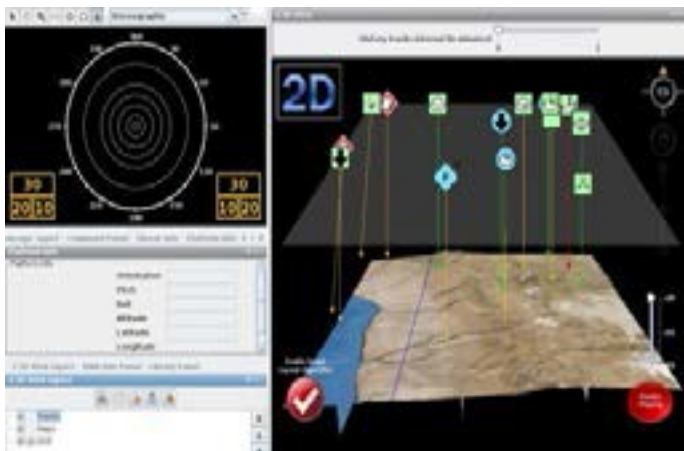
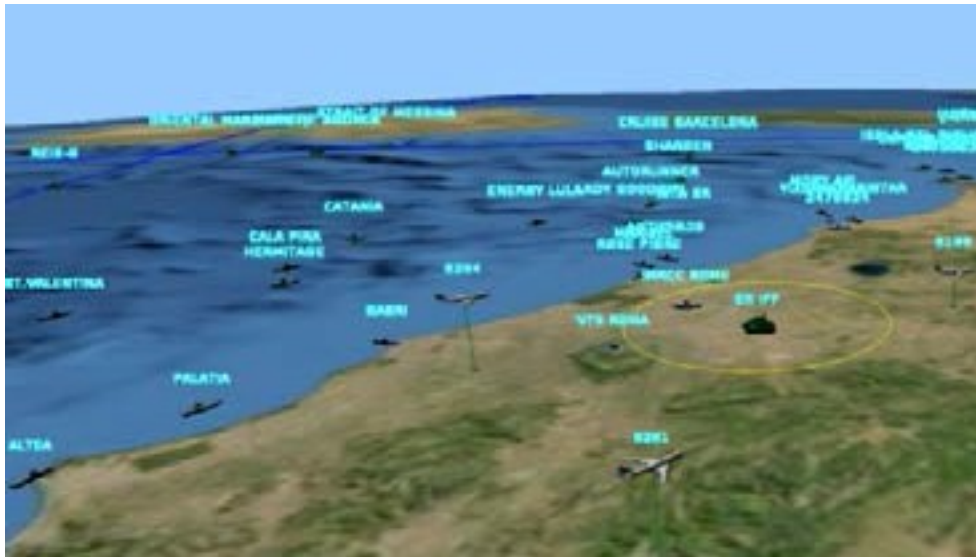


INTEGRATED «VIRGILIUS»





# PREPARE & EXECUTE SIGINT & ISR



C2/C4i SYSTEMS  
«ELT LOKI FAMILY»

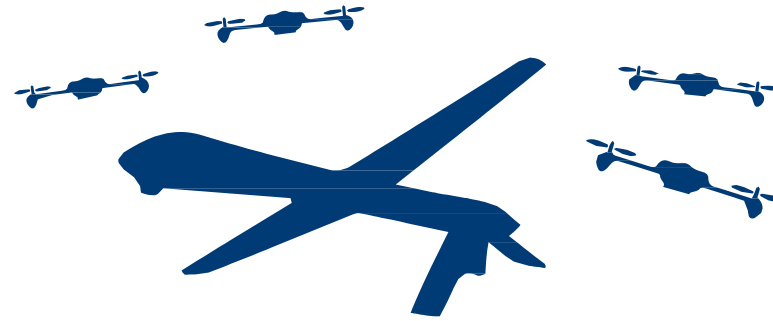


ELINT  
«ELT/819 FAMILY»

GROUND ELECTRONIC SURVEILLANCE IN NETWORKED ENVIRONMENT FOR REAL-TIME SITUATION AWARENESS



PREPARE & EXECUTE



UAS

SPECIFIC EW SOLUTIONS FOR  
Unmanned Aerial Systems





# PREPARE & EXECUTE HALE/MALE



GLOBAL HAWK - CLASS



PREDATOR - CLASS



P1HH - CLASS



SIGINT, ISR, SUPPORT JAMMING  
«ELT/1002 - ELT/1003»



# PREPARE & EXECUTE TACTICAL



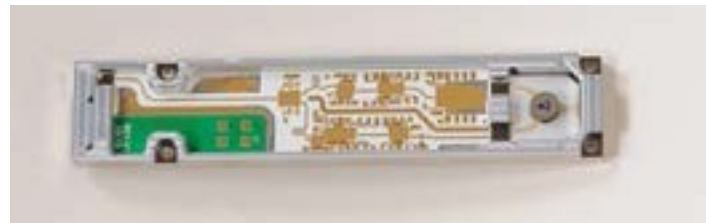
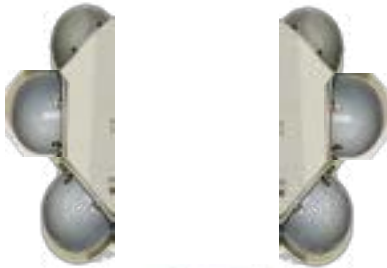
FALCO - CLASS



SD-150 HERO - CLASS



RQ7B SHADOW - CLASS



ISR, STAND.IN JAMMING  
«RWR-ESM ELT/1000 - ELT /1001»



# PREPARE & EXECUTE MINI/MICRO

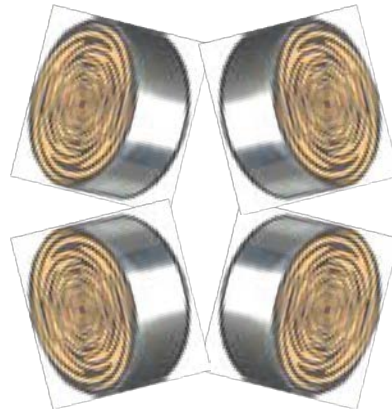


*BLACK HORNET - CLASS*

*SCAN EAGLE - CLASS*

*RAVEN - CLASS*

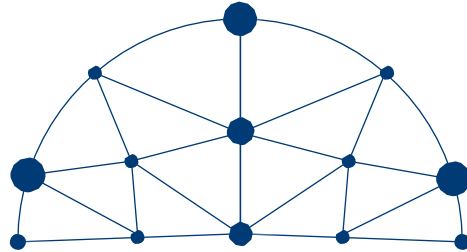
*SKYLARK - CLASS*



*DISTRIBUTED EW, UAV SWARM  
HOSTILE UAV DETECTION AND NEUTRALIZATION, GPS JAMMING*



PREPARE & EXECUTE



# CYBER EW & INTELLIGENCE

A 360° Capability





# PREPARE & EXECUTE CYBER EW & INTELLIGENCE

**A 360° CAPABILITY WITH DEDICATED FACILITIES IN ORDER TO:**

- Gather and collect sensitive information from the EMS of networks
- Discover patterns of meanings and operationally meaningful links in Big Data
- Gain access to a selected flow of information in a target network
- Cripple physical communications
- Degrade or incapacitate the performance of a network of systems, through the network and operating system

## CYBER EW & INTELLIGENCE CAPABILITY MODULES

LOKI +	G-SINT	DSINT	DIGILAB	CERS	EXCALIBUR
					
CYBER C2 I	Strategic & Tactical Comint -GSM AND SATELLITE INTERCEPTION	Digital Intelligence -WEB INTELLIGENCE -LAWFUL INTERCEPTION -BIG DATA ANALYSIS -CORRELATION AND CYBER COMMON OPERATING PICTURE -SEMANTIC INTELLIGENCE	Reverse Engineering & Decryption	Defence -COMPUTER EMERGENCY RESPONSE SYSTEM -NETWORK VULNERABILITIES ASSESSMENT -PENETRATION TEST -CYBER DEFENCE	Cyber Attack -CYBER EW ATTACK AT THE PHYSICAL, NETWORK AND COGNITIVE LAYER



# PREPARE & EXECUTE CYBER EW & INTELLIGENCE

D-SINT  
Digital & Spectrum Intelligence Integrated Suite

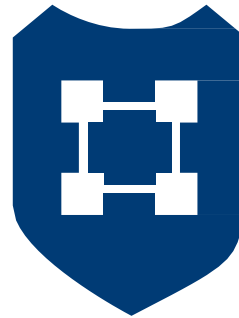
## CYBER COMMON OPERATIONAL



DISSEMINATE



PREPARE & EXECUTE



# PUBLIC SECURITY & LAW ENFORCEMENT



# PREPARE & EXECUTE

## PUBLIC SECURITY & LAW ENFORCEMENT

### SOLUTIONS FOR INTELLIGENCE



*MUROS  
Multi-Role Operational Support vehicle*

## MUROS

### MULTI-ROLE OPERATIONAL SUPPORT VEHICLE

The MUROS systems family is conceived for surveillance, investigation and intelligence operations.

### CAPABILITIES

- Border Surveillance
- Multifunctional Sensor
- Image & Video Processing
- Command & Control
- Tactical Video and Acoustic Surveillance
- Environment Measurement
- Traffic Intelligence
- Communication Intelligence and Semantic Analysis
- Intelligence Analysis Centre
- IP Data Interception and Analysis
- Jamming of Communications
- Communication, Interception and Direction Finding





# PREPARE & EXECUTE

## PUBLIC SECURITY & LAW ENFORCEMENT

## MUROS

SOLUTIONS FOR INTELLIGENCE



### CAMOUFLAGED CONFIGURATION

- Lawful interception
- Communication interception between 20 MHz – 6 GHz
- Camouflaged integration of direction finding antennas
- Communication jamming
- Fully camouflaged video-cameras and microphones
- Face / speech recognition
- IP data interception and analysis
- Remote control of the vehicle and sensors

### CYBER CONFIGURATION

- IP Monitoring
- WEBINT
- Common Operational Picture

### BORDER SURVEILLANCE CONFIGURATION

- Integration of multifunctional equipment for the detection and tracking of vehicles and pedestrians
- Day-night and infrared cameras
- Communication interception & direction finding
- Data fusion Centre
- Cueing of high definition cameras with radar COMINT
- Integration of micro/mini-UAV (Unmanned Aerial Vehicle) equipped with
  - Electro-optical sensors
  - Communication (WiFi/GSM) scanner



*PREPARE & EXECUTE*

*SUPPORT*

*ANTICIPATE THE  
FUTURE*



# SUPPORT

## EDUCATION & OPERATIONAL SUPPORT

- EW Database Management Systems
- Mission Libraries Generation and Validation
- EW Simulators for both on-board and ground training
- EW Solutions for Mission Planning, Briefing and Debriefing Tools
- EW Academy for continuous Personnel Education, Training and Certification

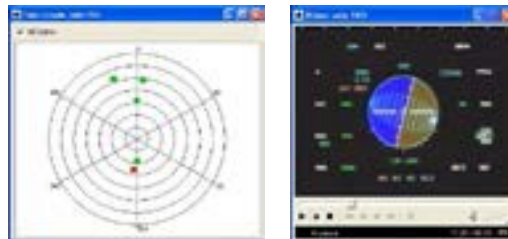
*C 130J SIMULATOR*



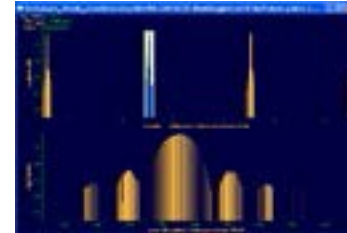
*EW LIBRARIES GENERATION*



*BRIEFING/DEBRIEFING TOOLS*



*MISSION DATA ANALYSIS*





*PREPARE & EXECUTE*

*SUPPORT*

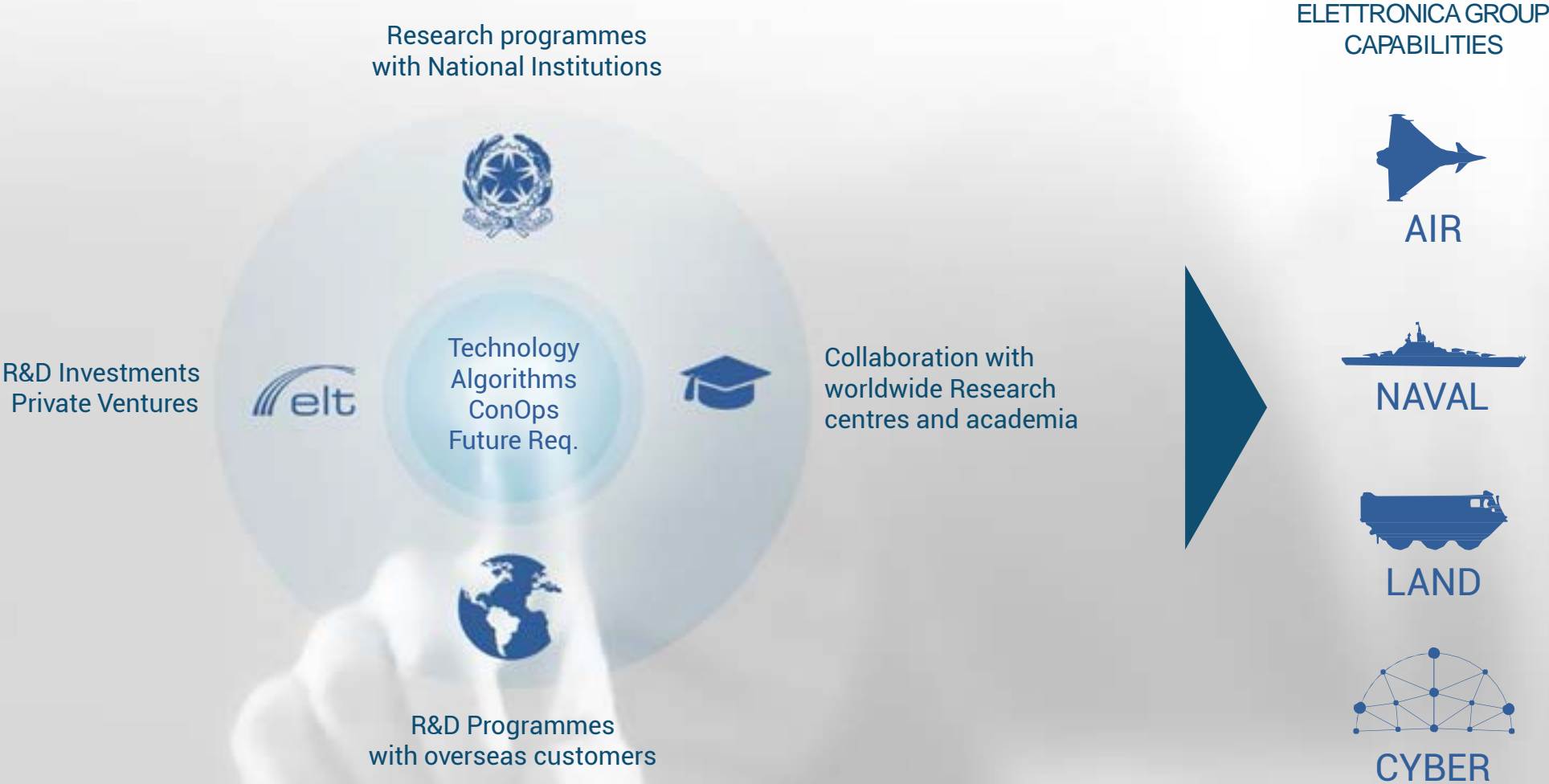
*ANTICIPATE THE  
FUTURE*





# ANTICIPATE THE FUTURE

*Being a leader in the present and future means having the ability to anticipate strategic decisions and adapt your vision to the evolving scenarios. ELETTRONICA cooperates with many worldwide centers of excellence to anticipate ideas and solutions and to be ready for the future challenges*



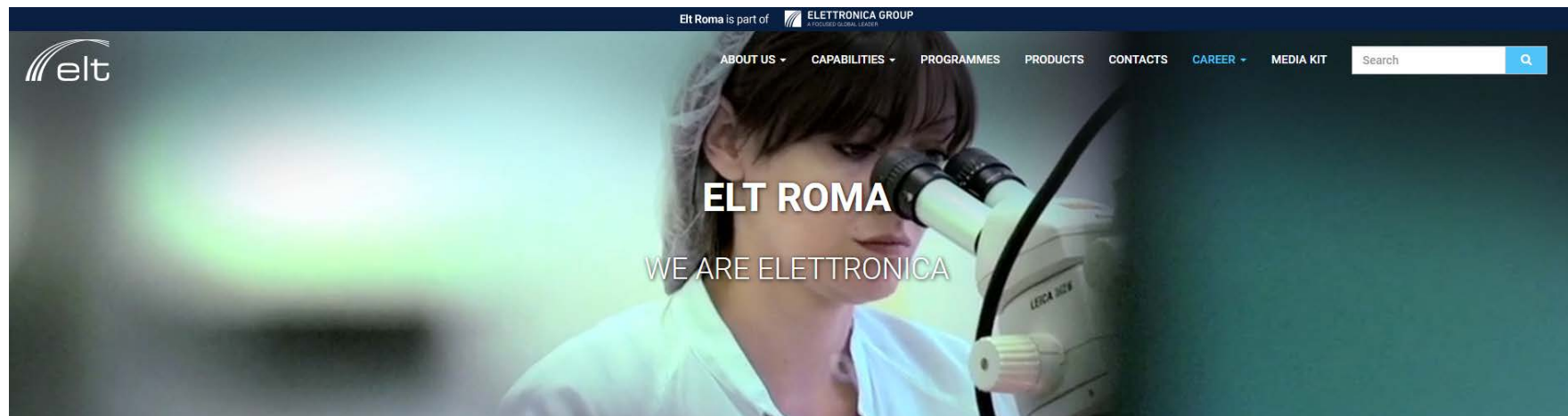
# MISSION ACCOMPLISHED

2.700 systems supplied  
to over 28 nations

More than 60 years of  
success



# <http://www.elt-roma.com/career>



## WORK AT ELT ROMA

That patrimony of our people's experience, competence and professionalism represents the most important Elt resource and what has enabled it to achieve increasing success and recognition over the years.

[READ MORE >](#)

